

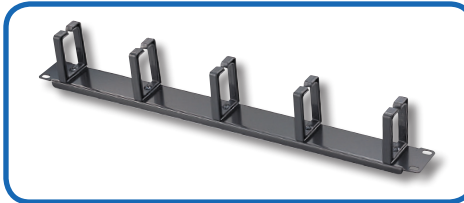


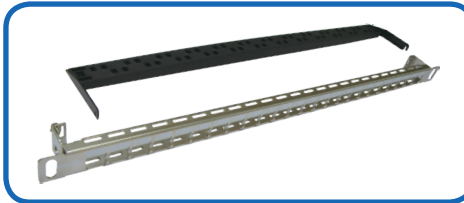

## Cable Management Panels

- Organize cables on the front and/or back of a rack to give installations an extremely neat, professional appearance
- Large capacity duct to allows quick shifting, adding and changing cables.

P/N	Description	Std Ctn Qty	
2304-01001	1U Space Panel-Manages cables on front and rear of rack. Includes 40mmX40mm duct on front 25mmX60mm duct on rear	20	
2304-01003	1U Space Panel-Manages cables on front of rack only Includes 40mmX40mm duct on front	20	
2304-01002	2U Space Panel-Manages cables on front and rear of rack Includes 80mmX80mm duct on front 60mmX80mm duct on rear	10	
2304-01004	2U Space Panel-Manages cables on front of rack only Includes 80mmX80mm duct on front	28	

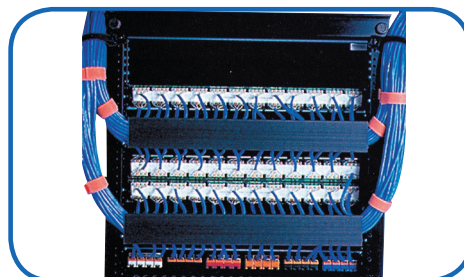
## Cable Management Panels

- Keeping large bundles well-organized
- Can be mounted on 19" EIA racks

P/N	Description	Std Ctn Qty	
2304-02001	19" 1U metal type cable entry panel with 5 hangers	25	
2304-02011	19" 1U metal type cable entry panel with 5 hangers & cover	-	
1406-00041	19" 1U 24 port blank patch panel, work with RJ45 keystone jack	15	
1406-00032	19" 0.5U 24 port blank patch panel, work with RJ45 shielded keystone jack	15	
2304-03004	19" 1U brush type cable entry panel	59	

## Versatile Cable Ties

- Prevents over tensioning of high performance Category 5e and fiber optic cables.
- Easy to release and reuse
- Ideal for applications requiring frequent cabling moves, adds or changes.



P/N	Color	Width	Max Bundle Dia	Std Pkg Qty	
2307-05001	Mixed 6 colors 4 pcs each	20mm	70mm	24	